

## HOW TO MANUALLY ERASE AND REBOOT THE FIRMWARE ON CW1200 CAPTURE BOX?

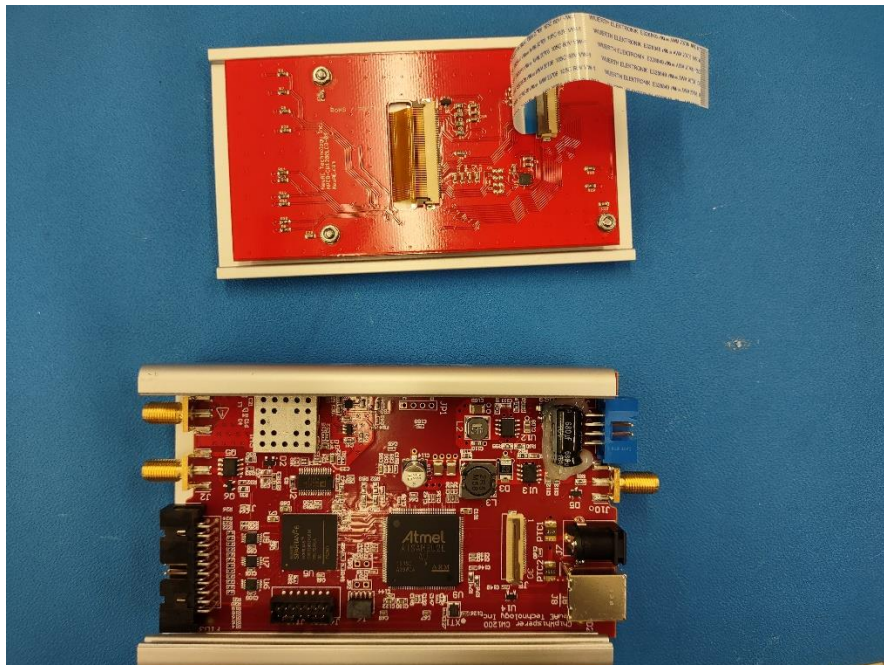
Why should you do that?

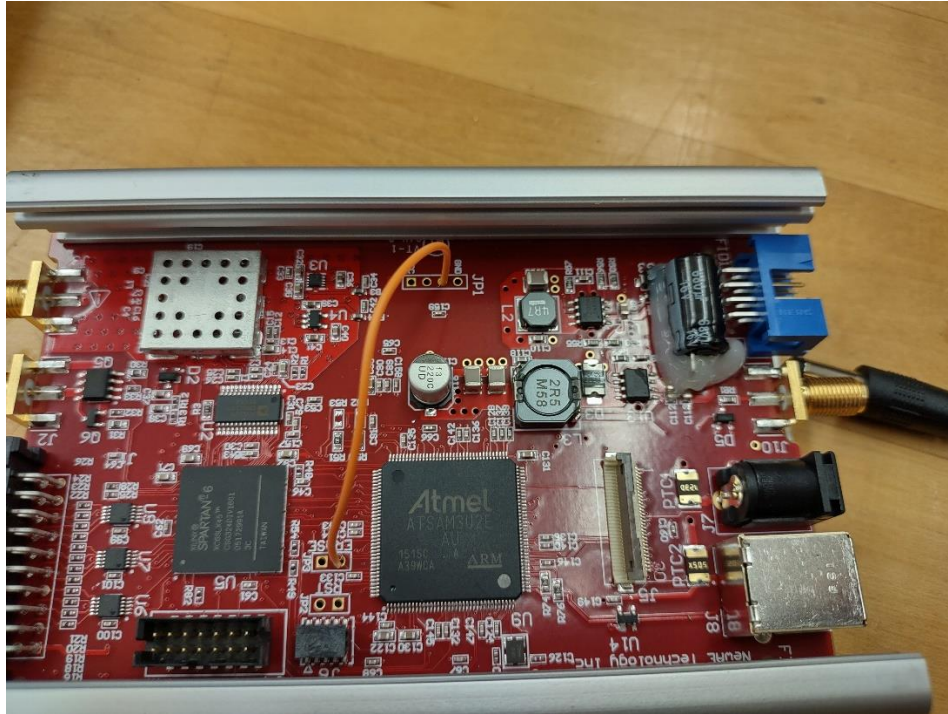
If you have connection issues, and you cannot resolve issues by using the jupyter firmware methods, this might be the solution that works. If you see a black screen on the capture box, or wrong device name on your computer's device manager, you should follow the steps in order to reboot the system.

1. Open the case. (Disassemble 8 screws-see pictures) (7/64 Allen wrench fits to screws)



2. Remember that there is a white connector that connects the display to the board. You should unplug it before separating them.





3. Short the circuit out as shown above. Next, plug in the device to the socket and connect to the computer.
4. If you see nothing related to usb connection on the computer, that means the erase succeeded.
5. Now download and run the zadiag in order to provide a usb connection again. Follow the steps shown on the website below:

<https://chipwhisperer.readthedocs.io/en/latest/drivers.html>

After completing steps, you should be able to see a usb device on the computer if you completed it successfully.

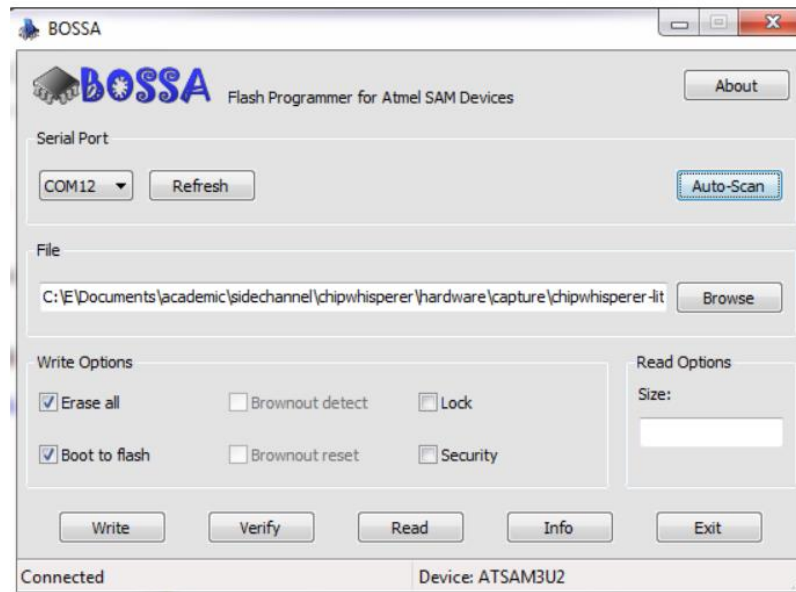
6. Download firmware. Here is the link below:  
<https://forum.newae.com/uploads/default/original/1X/d362b0d1f4c1dfe853143270d99e0e75ce5d2933.zip>

If it does not work, find CW1200\_SAM3UFW.zip (53.3 KB from this link

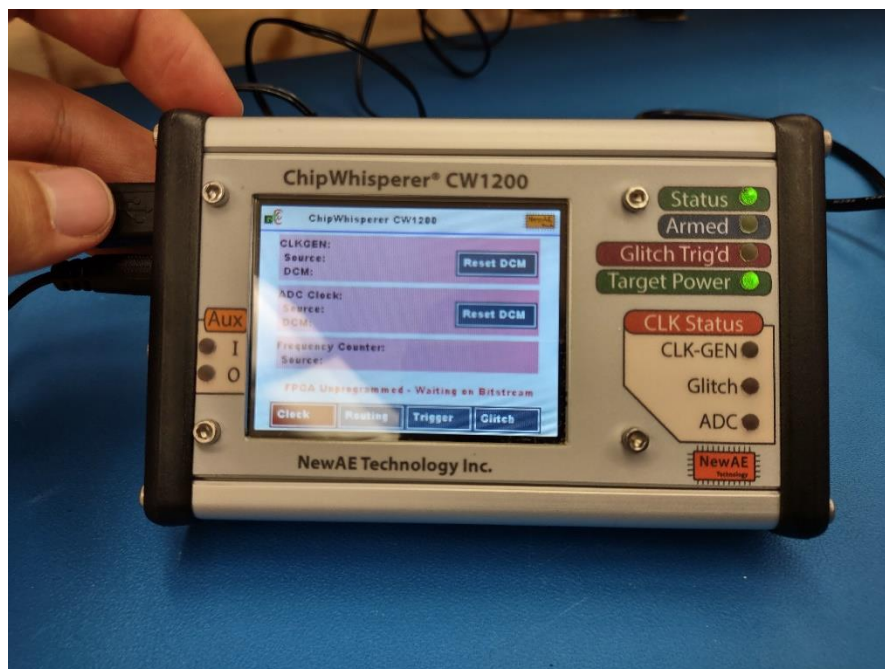
<https://forum.newae.com/t/failed-to-update-firmware-of-cw1200-chipwhisperer-pro/1517> )

7. Next, setup and run bossa.

Download bossa from here: <https://www.shumatech.com/web/products/bossa>



8. If you see “connected” in the left-down corner, and if you see port and file, that means you are ready. Mark erase all and boot to flash boxes. First click “write”, next “verify”, and “exit” .
9. Disconnect the device from everywhere.
10. Connect the device as usual. You must see the screen below.



11. NOW YOU MANUALLY REBOOTED YOUR CW1200 capture box.

This is created by Mehmet\_20. Thanks.