

Report on Artix7 CW305 NewAE

First Solution: Using ChipWhisperer Lubuntu 32-bit 25AUG2015

1. Verifying that the Virtual machine detect the CW305 (OK) Fig1.
2. I checked the file `/etc/udev/rules.d/99-newae.rules` (OK)
3. I did all the steps mentioned in this link https://wiki.newae.com/Linux_Driver_Setup
Note: I know well that in Virtual machine I do not need to do these steps
But I verified to be sure.
4. Git pull to the chipwhisperer by git pull (OK) Fig2.
5. Open python
6. Import : `from chipwhisperer.capture.targets.CW305 import CW305`
7. `cw = CW305()`
8. After that trying to set the vccint to 0.95 (NOT OK) Fig3.

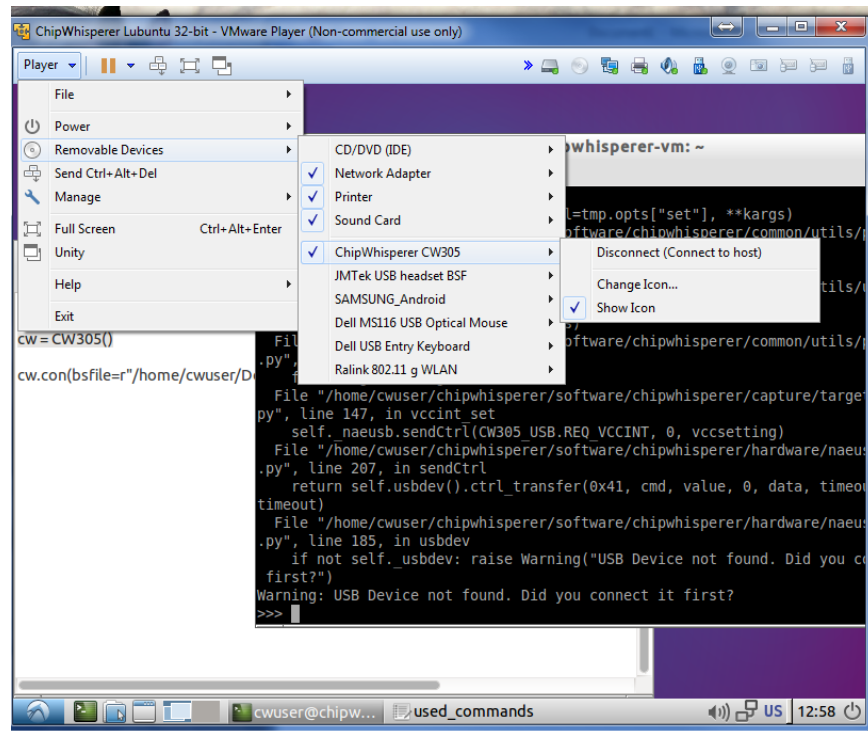


Figure 1: USB verification on virtual machine

```

cwuser@chipwhisperer-vm:~$ ls
chipwhisperer Desktop Documents Downloads Public Templates toto
cwuser@chipwhisperer-vm:~$ cd chipwhisperer
cwuser@chipwhisperer-vm:~/chipwhisperer$ git pull
Already up-to-date.
cwuser@chipwhisperer-vm:~/chipwhisperer$ █

```

Figure 2: git pull to update chipwhisperer

```

cwuser@chipwhisperer-vm:~$ ls
chipwhisperer Desktop Documents Downloads Public Templates toto
cwuser@chipwhisperer-vm:~$ cd chipwhisperer
cwuser@chipwhisperer-vm:~/chipwhisperer$ git pull
Already up-to-date.
cwuser@chipwhisperer-vm:~/chipwhisperer$ python
Python 2.7.9 (default, Apr  2 2015, 15:34:55)
[GCC 4.9.2] on linux2
Type "help", "copyright", "credits" or "license" for more information.
>>> from chipwhisperer.capture.targets.CW305 import CW305
>>> cw = CW305()
>>> cw.vccint_set(0.95)
Traceback (most recent call last):
  File "<stdin>", line 1, in <module>
  File "/home/cwuser/chipwhisperer/software/chipwhisperer/common/utils/parameter.py", line 749, in func_wrapper
    tmp.setValue(args[1], blockSignal=tmp.opts["set"], **kwargs)
  File "/home/cwuser/chipwhisperer/software/chipwhisperer/common/utils/parameter.py", line 357, in setValue
    self.sigValueChanged.emit(value, blockSignal=self.setValue)
  File "/home/cwuser/chipwhisperer/software/chipwhisperer/common/utils/util.py", line 233, in emit
    method(targetObj, *args, **kwargs)
  File "/home/cwuser/chipwhisperer/software/chipwhisperer/common/utils/parameter.py", line 753, in func_wrapper
    func(*args, **kwargs)
  File "/home/cwuser/chipwhisperer/software/chipwhisperer/capture/targets/CW305.py", line 147, in vccint_set
    self.naeusb.sendCtrl(CW305_USB.REQ_VCCINT, 0, vccsetting)
  File "/home/cwuser/chipwhisperer/software/chipwhisperer/hardware/naeusb/naeusb.py", line 207, in sendCtrl
    return self.usbdev().ctrl_transfer(0x41, cmd, value, 0, data, timeout=self.timeout)
  File "/home/cwuser/chipwhisperer/software/chipwhisperer/hardware/naeusb/naeusb.py", line 185, in usbdev
    if not self._usbdev: raise Warning("USB Device not found. Did you connect it first?")
Warning: USB Device not found. Did you connect it first?
>>> █

```

Figure 3 : USB Device not found

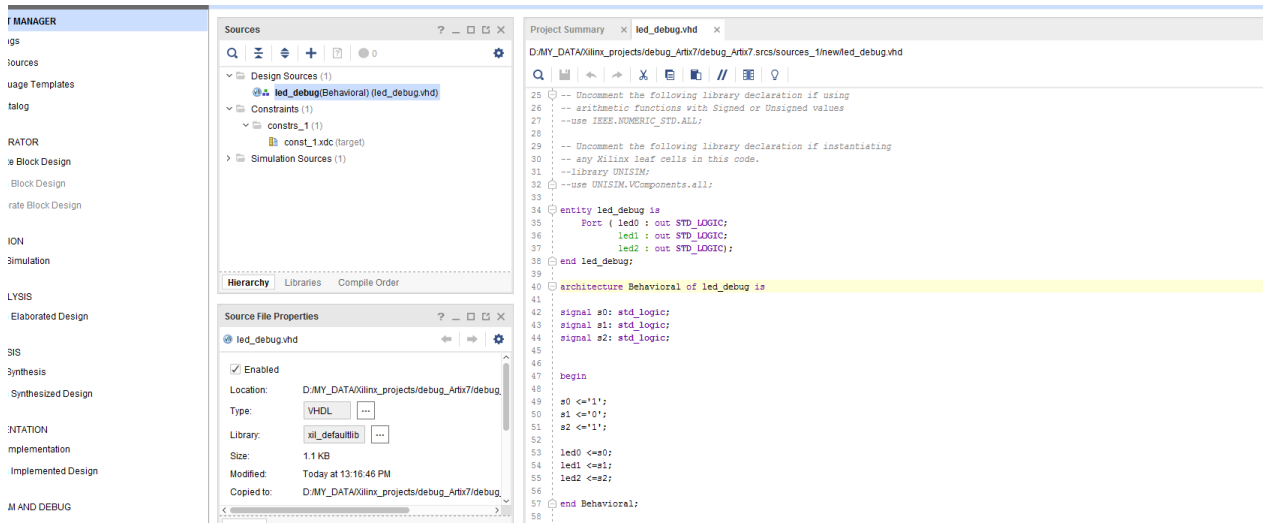


Figure 4 project to debug vhd source

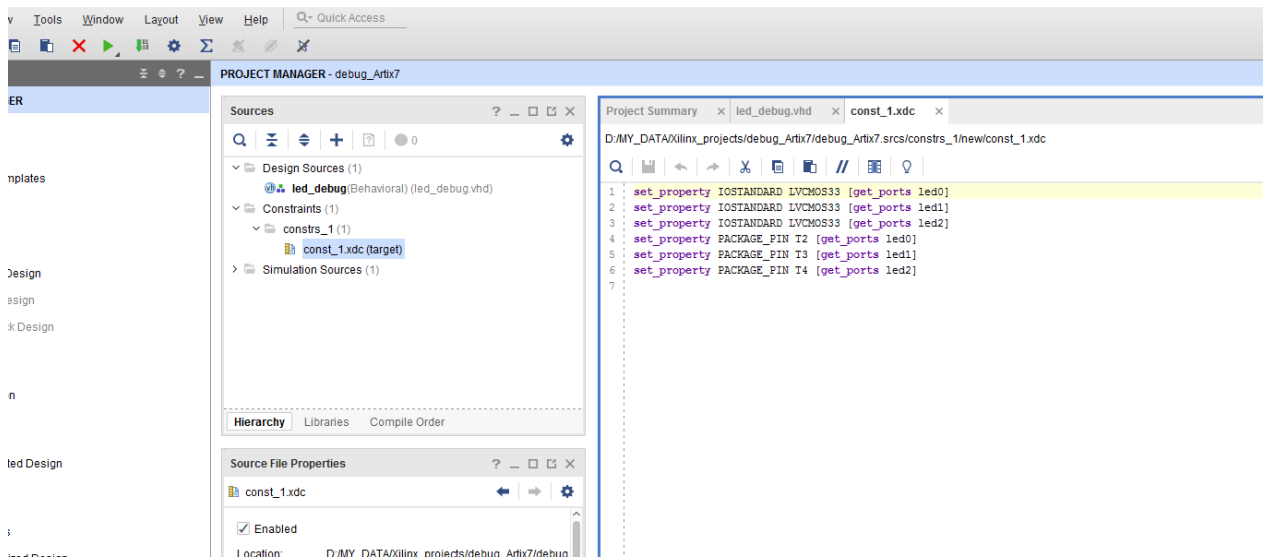


Figure 5 const_1.xdc file